



Christ Church
.....Downend
Annual
Report

.....
Learning to live the life

2012

April 2013

Contents

3	Introduction
5	About Christ Church Downend
6	Report from the PCC
8	Christ Church Downend structure
10	Worship
11	Pastoral care
12	Discipleship
13	Leadership development
14	Children's ministry
16	Youth ministry
18	Family
19	Local outreach
20	Global mission links
21	Christians Against Poverty (CAP)
22	Buildings, finance and administration
23	Church development
24	Financial summary
28	Financial summary balance sheet
30	Statement of financial activities

Report and accounts for the Annual Church Meeting for the Year 2013, which took place on Sunday 21st April 2013.

Christ Church is the Anglican (Church of England) Parish Church of Downend, serving a population of over 27 000 people including those living in the communities of Staple Hill, Oldbury Court, Downend, Blackhorse, Bromley Heath and part of Emersons Green. It is part of the Diocese of Bristol.

Christ Church's central focus is 'Learning to Live the Life' in three dimensions - up towards God (Spirituality), in towards each other (Community), and out towards the world (Mission).

Introduction

As we look back on 2012 at Christ Church one word stands out above all others – THANKFULNESS!



If reading this report doesn't kindle a flame of thankfulness to God in your heart I don't know what will! Huge amounts of time, creativity, careful planning, hard work and sacrificial giving weave their way through the story of God's purposes being worked out through his people, and I want to express sincere thanks to absolutely everyone for all they have contributed over the year.

"Learning to live the Life" has been the focus for our church, as we have sought to build relationships - up, in and out - through the love of God, Father, Son and Holy Spirit. In July, the PCC spent time together seeking to explore how this might work out in the whole of life, not just in 'church life'. We made a commitment to pray, to listen and seek the Holy Spirit's leading as we travelled together. One thing became clear over the ensuing months from a number of conversations and questions – we weren't very clear! Most of the membership of Christ Church didn't really know what the vision was or what it meant in everyday living! Therefore we took the decision to form a Vision Team who have worked imaginatively and prayerfully in conjunction with the PCC and who, this April, are launching a two year process to involve the whole church in working through how the vision we believe God has given for us at Christ Church can become more of a reality for everyone.

Here is a summary of the vision. There is an exciting road ahead – and it's all about LIFE!

Our Goal: "To become (people) fully alive (in Christ)".

Our Vision: Learning to Live the Life

Jesus came that we might have 'life, and life in all its fullness.' (John 10:10)

The purpose of Christ Church is to invite others to experience this new life. Our vision is to become a vibrant community that is learning to live life in Christ, on our frontlines - wherever God has placed us. Therefore our primary focus is on prayerfully supporting and practically equipping one another to be authentic Christ-followers in the whole of our lives.

The vision of life that is seen in Jesus is of a person who is:

- Breathing in God's love through prayer
- Breathing out God's love through action

Only God can do this work in us. The Lord alone is the Life Giver. Yet there are vital lessons to grasp about how this work takes place, and we will begin exploring these things with a series during May looking at Jesus' teaching in John Chapter 15.

As we travel may we all sing in our hearts the prayer that comes out of the psalms:

Bless the Lord, my soul, and bless God's holy name;
bless the Lord my soul, who leads me into life.

Jonathan Vickery | Vicar of Christ Church Downend

About Christ Church Downend

Christ Church Downend, Parish Office, 57 North Street, Downend, Bristol. BS16 5SG
0117 908 9867 | office@christchurchdownend.com | www.christchurchdownend.com

Clergy: Rev Jonathan Vickery (Vicar)
Rev Paul Peterson (Associate Minister
and Chair of PCC)
Rev Chris Dobson (Assistant Minister)

Church Wardens: Nigel Stowe and Jill
Williams

PCC Elected Members

Sally Bartram
Martin Brown (Lay Chair)
Paul Hacker
Ray Hackney (treasurer)
Helen Johnson
Andy McNeil
Jamie Paddon
Adam Parfitt
Mike Parsons
Pauline Pearce
Roy Pope
Bill Robbins
Robert Southgate
Belinda Stowe
Derrick Thompson

Committee Structure: The Operations
Management Group (OMG) is charged
with carrying out the business of the
Council between PCC meetings and
anticipating the wishes of the Council.

Members from April 2012:

Rev Jonathan Vickery
Rev Paul Peterson
Martin Brown (Senior Lay Minister)
Nigel Stowe (Church Warden)
Jill Williams (Church Warden)
Brenda Greet (Parish Administrator)
Bill Robbins (Chair of OMG)
Ray Hackney (Church Treasurer)

Other elected posts

Deanery Synod: Paul Churchill and
Andy Smith

Health and Safety Officer: Norman Low

Electoral Roll Officer: Norman Low

Safeguarding Officer: Sally Ashton
Vulnerable adults administrator:
Moirra Staley

Other positions:

Deputy Wardens (Church Centre)
Quakers Road: Malcolm Coles and Mary
Massey

Licensed Lay Ministers
Martin Brown, Myra Brown, Heather
Bunting (moved away July 2012), Rob
Stewart and Rich Harris

Children's Worker: Tracie Jenkins

Pastoral Care Worker: Shelley Peterson

Family Worker: Anita Dobson

Youth Work Student: Jamie Chapman
(on placement until August 2012)

CAP Centre Staff: Hilary Kitchen (Centre
Manager)

Parish Administrator: Brenda Greet
Administration Assistant: Claire Bird

PCC Secretary: Alison Harrison

Verger: Andy McNeill

Report from the PCC

The Parochial Church Council (PCC) held six bi-monthly meetings in 2012, and a Vision Morning, which focussed on our 'Learning to Live the Life' theme. Councillor Graeme Riley, Downend and Bromley Heath Parish Council, attended the March meeting to discuss the Downend and Bromley Heath's community ten year plan.



An internal review of the PCC revealed that meetings were prayerful, and difficult decisions made. Issues raised were: length and location of the meetings; timely distribution of material prior to meetings; and that members be given defined roles to utilize talents more effectively.

Throughout the year, following prayer, reflection and discussion a number of proposals were approved:

- dissolving of Haven House's charity status, and appointment of a management team, with accounts transferred to the PCC;
- creation of a more detailed Health and Safety Policy;
- acceptance of the new Vulnerable Adults Policy;
- church reordering plans being presented to the congregation for feedback, grant applications, and tithing of funds to the Moldova mission;
- using 'Give.net' for online giving;
- White Design's application to Technology Strategy Board for an Innovative Refurbishment Grant, which, if successful, could result in Christ Church being featured as a showcase church for innovative renovations;
- relocating Traidcraft operations to Pendennis Church;
- new Eucharistic Assistants; Safe from Harm nominees;
- renewal of lay minister's term;
- change of name from North Street Hall to Christ Church Parish Hall;
- church being open each Tuesday for prayer, reflection, worship and other appropriate activities;
- new church website, and presence on Facebook;

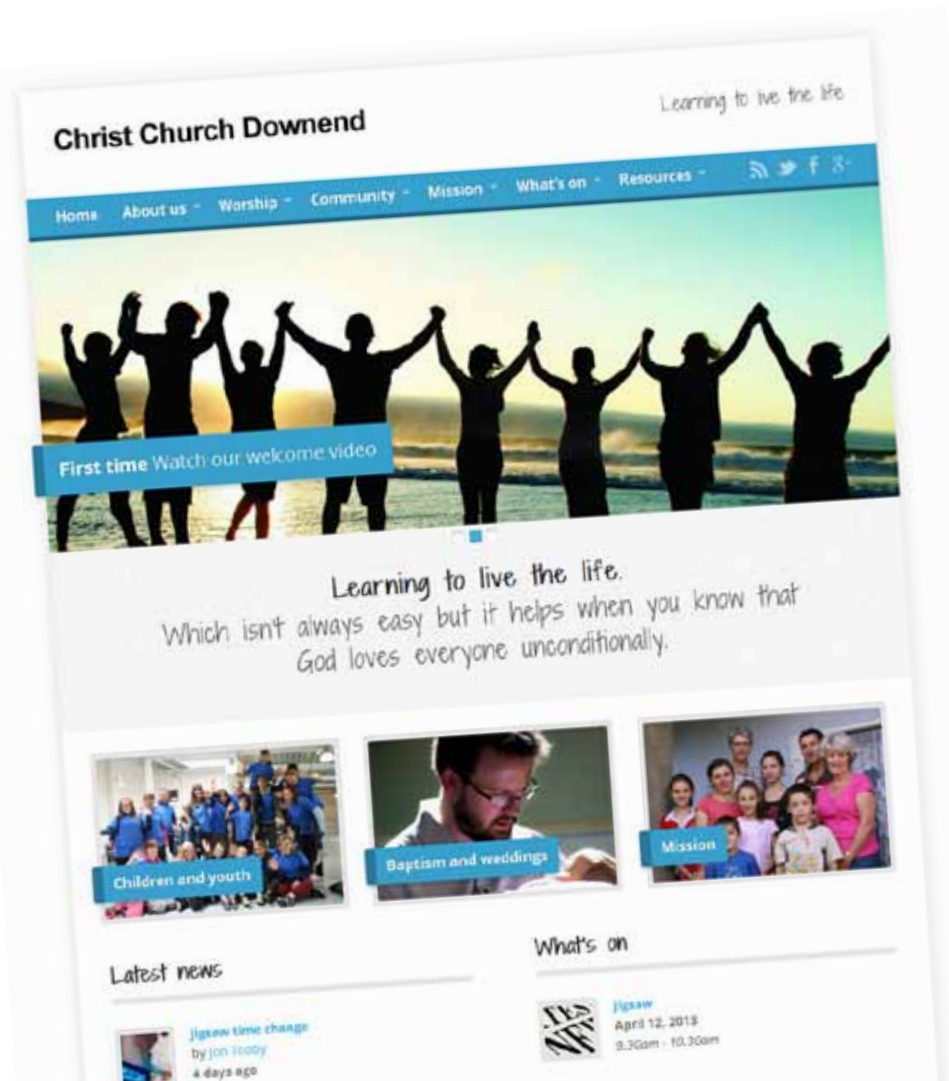
The PCC sanctioned a number of staff changes. At last year's APCM, Nigel Stowe was elected Church Warden, replacing Roy Pope, who along with Sally Bartram and Belinda Stowe were elected as members.

Jamie Chapman has resigned as Youth Work Student.

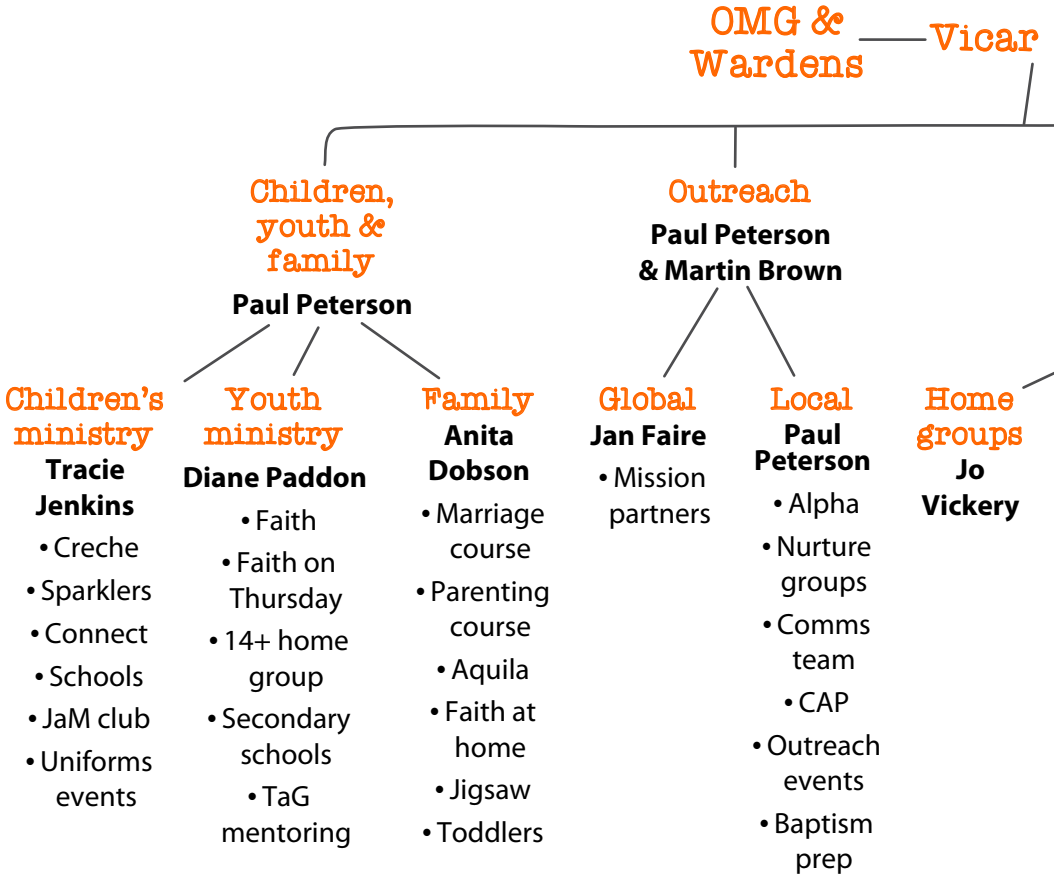
The following appointments were made: Rev Paul Peterson to PCC Chair, replacing Rev Jo Vickery; Peter Misselbrook as 'Giving for Life' Coordinator, replacing Chris Johnson; two PCC members to serve on the OMG; Pauline Pearce to supervise Haven House; Moira Staley as Nominated Person for Safeguarding Adults; Belinda Stowe as a Foundation Governor of Christ Church Infant School; and Ant Miles replacing Anita Dobson as Worship Group Coordinator.

After an enjoyable two year period serving as PCC Secretary, I will be relinquishing the role. I wish the same joy to my replacement.

Alison Harrison | PCC Secretary



Church structure



& PCC — Staff team

Discipleship & leadership
Jo Vickery & Paul Peterson

Leadership development

- Paul Peterson**
- Lay ministers
 - Conferences
 - Growing leaders

Other initiatives

- Discipleship triplets
- Mentoring
- Prayer life

Worship
Jo Vickery

- Projection team
- Sound team
- Welcome team
- Flowers
- Worship group
- Services
- Prayer ministry
- Care 4 creation
- Open church

Pastoral Care
Shelley Peterson

- Bereavement
- Church Fellowship
- Home visits
 - Home communion
- Mothers Union
- Sanctuary

Buildings, administration & finance

Bill Robbins & OMG

- Buildings management committee
- Cleaning
- Finance
- Parish office
- Personnel

Rooted in prayer

Worship

We began 2012 by giving God thanks for the many and great blessings he has poured out upon us as a church. At the same time we recognised and embraced God's call to be a people that bless others. God blesses us so that we might be a blessing to those we meet day by day.



This dynamic has been seen in all sorts of ways, not least on Thursday mornings, where anything up to 50 people come together each week to worship - feeding on God's word and sacrament, and experiencing warm fellowship over coffee and exceptional cakes. For many, this has been a gentle way into worship and a means of building some significant relationships. There is a growing confidence to invite friends who may be unfamiliar with 'church' to come and experience the blessing of being in the presence of the God of love. Similarly on Tuesdays, Open church offers a peaceful and prayerful environment where we can extend a personal welcome to those who may really value the chance to come and be still for a while, or be with someone who will listen and maybe bring concerns to the Lord in prayer.

Increasingly, Christ Church is becoming a 'house of prayer for all nations'!

We are blessed to have a number of people who have been more than willing to receive training in appropriate ways of praying for others, and their ministry week by week is greatly appreciated. We pray this team will grow over the coming year.

We are blessed to have musicians both at the Church Centre and the Parish Church who offer their God-given ministries back to God week by week, so that God can bless others through what they give – and He is! Indeed, there are a huge number of people involved in 'making Sundays happen'. Their attitude is always one of generosity and joy in the giving of their time and talents. This, in itself is a very special act of worship for which we are genuinely thankful.

In September, we began a series for the whole church called 'Life on the Frontline'. We took a fresh look at how our worship is not confined to what happens in church, but rather is a way of living that embraces all our days, wherever we are. That is very much about blessing others, and blessing our community. As part of this emphasis we did something highly symbolic at Harvest. At the all age celebration, everyone was given a daffodil bulb with the invitation to write one's own initials on it. Each bulb was brought to the front and offered to the Lord as a sign of our desire to plant, or invest into the future

that only God was able to bring about. Steve Powell then planted all the bulbs in the Spiritual Garden and throughout the church yard. We see them now in their prime, having come to fruition, blessing others with their beauty. What a parable of what God is doing with a people who through their worship and work invest in the Kingdom that God is bringing about, a kingdom where blessing abounds!

Jo Vickery | Vicar

Pastoral care

It has been a positive year! People are 'living the life' in everyday ways and places. So many people are involved in the day to day listening and caring life of those within Christ Church and those linked to or outside of church. We have had many new people visiting and joining our church family, the Welcome Team are our first encounter of warmth, and once inside people are genuinely greeted and welcomed by those they sit next to. Home groups happen weekly or fortnightly, and many people are encouraged and supported by the friendship and fellowship they encounter there. The Pastoral Care Team has grown and many quietly undertaken visits to people at home or in hospital take place each week. There are now leaflets and books available in the Pastoral Care section of the foyer for people to take or borrow for themselves or others – a great resource when we find it hard to know what to say ourselves.



One of my highlights would be the way that the Thursday 9.30am communion service followed by coffee and Open Church until 12pm has blossomed and grown. A welcoming and warm friendliness is extended to all and much baking is done to bless people with cake! It has been particularly exciting to hold the 'Being There' basic listening skills course at Christ Church this last term. People from all aspects of church life have been encouraged and resourced to understand and practice the 'art' of listening. We are hoping to repeat this sometime next year.

As I move on from this role I am so thankful for the opportunity to have served in this way, and look forward to remaining a cog in the works from a different angle. Please pray that the new person appointed to the role will have the wisdom and strength needed to further encourage and develop our caring outlook.

Shelley Peterson | Pastoral Care Worker

Discipleship

There has been a small but significant shift over the past year in the way that people are maturing in their discipleship at Christ Church. The emphasis has, for a long time, been on Homegroups as the key environment where spiritual growth can happen. They remain vital in that respect. However, we are seeing other dimensions of discipleship come to the fore as increasing numbers of people are getting together in 2's or 3's to focus intentionally on 'discipling' one another – a sort of mutual mentoring, iron sharpening iron, a way of building one another up through study and prayer which is related to the issues people are facing in everyday life. These 'traids' or 'triplets' may be short or long term in their duration, depending on each person's situation, but all stem from an inner hunger to go deeper with God and see one another's potential being more fully realised through the Spirit's life within.



Our discipleship has been further energised by the Life on the Frontline series where horizons have been widened to see God at work in the ordinary, and the value of our work affirmed, whatever form that may take. The monthly gatherings with Charles Hipsley, Director of the Work Forum of LICC, have been highly significant for those participating. Following this ten month pilot project the course Transforming Work will be launched nationally and will no doubt play an important role in the way discipleship is taken forward across the UK.

Jo Vickery | Vicar

Leadership development

Last year on Thursday evenings, once a month around 30 people involved in leadership in church, workplace or community gathered together for inspiring teaching, training and encouragement under the 'Growing Leaders' banner. I'll let two people who took part in the 'Growing Leaders' experience speak for themselves.



"Growing Leaders has taught me about how, with Christ leading me, I can learn to take control of my life, rather than trying to live up to what other expected of me."

"Growing leaders has developed my leadership qualities, helped me to better understand people and strengthened my relationship with God."

I am actively exploring the possibility of running another Growing Leaders Course for the church and deanery from September 2013, as part of our ongoing commitment to resource people on their frontlines.

The Transforming Work course has followed on from that and has also been well received as an encouragement to live and lead well in the workplace.

Meanwhile we have been resourced through the Willow Creek Global Leadership Summit, both through their Bristol conference and the local summit held jointly with the Sanctuary Church.

Paul Peterson | Associate Minister

Children's ministry

Throughout 2012 we continued to share collective worship with four local schools and the popular lunch time Bible Club continues in our infant school. Many local schools have visited our church to learn more about the building, its purpose and its people.



For the first time this year five members of Christ Church shared an RE lesson with the year 6 children in our junior school, answering questions about their personal faith. This is something we intend to continue and build upon.

JaM Club, our midweek church for children, is still thriving and attracting newcomers. These children are discovering more and more about God, His love for them, and his gift of Jesus.

We saw a definite increase in the number of parents wanting something different for their children at Halloween last October. We praise God that almost 50 children joined us for our annual Light Party.

The busiest event of the year for children is our annual Holiday Bible Club. The obvious theme for 2012 was sport, and we welcomed 80 children to our 'Sports Academy Holiday Club'. Together we followed the life story and life values of David, from shepherd boy to king, using puppets, drama, music, dance, sports, games, art and craft.

Having so many young families at Christ Church we are very privileged to be able to share with up to 45 children every Sunday morning in four age groups. Their leaders provide lots of great fun and activities that encourage children to really encounter God for themselves. We were delighted to witness two of our older boys making a commitment of their lives to Jesus during discipleship classes last summer.

And finally. Megan heard about baptism in an RE lesson at our junior school and asked her grandparents to explain it more fully. Jarod came to our Bible



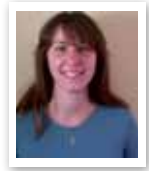
Holiday Club, is friends with two of our Connect Plus boys and has asked to be baptised. They are currently sharing baptism preparation classes and are really excited and enthusiastic about the things they are discovering. These are two eight year old children, not as yet regular church attenders who never met until now. And yet they are thinking very deeply, asking very sensible questions, making very mature observations and coming to very positive conclusions and decisions. Please God, may we never restrict what we think our children can experience with you and through you. AMEN

Tracie Jenkins | Children's Worker



Youth ministry

What a year it's been! The Faith Youth Team, fuelled by prayer, continues to strengthen, with our own Youth members developing into Youth Leaders and sharing in the privilege of serving our Young People. The Faith Youth Group itself continues to grow in number, as friends invite more friends.



One of last year's highlights was the Youth Weekend at Heatree in Devon. It was a very special time of fun and activity, worship and teaching, eating and sleepless nights! Amazing feedback revealed that people had been really challenged and inspired by our studies on the 'Crazy Sayings of Jesus!'

Another highlight was the evening we hosted our local MP Jack Lopresti, and as a Group, took the opportunity to pray over him.

We have seen great developments in the area of 'Intentional Discipleship of Young People.' More Young People are being TaG mentored and following a six week Discipleship Course, eight Young People were confirmed or baptised. Serving and caring for others is a natural response to loving Jesus. Faith has served in the community by litter picking at Downend Secondary School, carol singing in Britannia Court and enjoying the wonderful experience of taking part in The Noise over the May Bank Holiday. A growing maturity is also seen in the Youth, as they lead worship regularly at Christ Church and Kainos.

The Youth have developed a Christ-like compassion for the homeless. Faith made sixty-eight pints of soup and several members have joined the 'Bristol Soup Run' and serve the homeless face-to-face. Twenty-eight Young People took part in the 'Sleep Out,' to capture a glimpse of what it is to sleep rough. Unable to sleep, a lot of bonding took place and prayers were said for the homeless around the fire pit. Around 6am thoughts of how we were going to dispose of all the damp dirty cardboard were interrupted by the sound of a Biffa lorry reversing into the pub car park next door – God taking care of the fine detail! On leaving at 8am the mood was slightly solemn, partly due to sleep deprivation but partly the sense that we had shared in an unforgettable and deeply significant experience, recorded powerfully in subsequent reflections.

This coming year we are looking forward to seeing God's faithful provision of the Youth Hub, being able to welcome more Young People from the wider community and all the new opportunities this will provide.

Diane Paddon | Youth Co-ordinator



Family

When I heard these comments in 2012/13 they gave me a sense of joy:



The parenting teenagers course:

"I feel more in control as a parent now: I may not always be able to change how my teenager acts, but I can change the way I respond...."

The All Age Panto service:

"A service that children could enjoy but that had a powerful message for the grown ups as well..."

Experience Easter outside:

"It showed that children and their parents are not forgotten on Good Friday. We believe God can reveal what he did on the cross to them too, and that they can respond..."

The growth of numbers at Jigsaw, our toddler service:

"Today is going to be a good day because it's a Jigsaw day!"

The faith in homes newsletter:

"I found it really inspiring and I'm definitely going to try the advent calendar idea."

The Ladies Pamper night:

"I was able to invite my friends, confident that they would have an enjoyable, uplifting evening."

Families are like plants: some tender and young, some battered by the elements, others thriving and fruitful. My aim in 2012 has been to make every opportunity we have to nurture faith in families and family life really count, by doing the things we do better and more upheld in prayer.

My prayer for 2013 is that we reach more families outside the church with opportunities to grow and thrive, through parenting and marriage courses. This will also release families of faith into greater flourishing, and provide them with something of obvious benefit to bring friends along to. Please pray for the right opening to hold a parenting course in a local school, and a marriage course in a local venue.

Anita Dobson | Family Worker

Local outreach

It's interesting if you look at Jesus' ministry on earth that he didn't have a series of planned events and big meetings where he proclaimed his message; he simply went with the flow of what the Father was doing and ministered to people where they were. Healing Bartimaeus who was sitting begging by the roadside, calling James and John as they mended their nets by the lake and entering into conversation with the woman at the well. This every day model of reaching out to others underpins our life at Christ Church. The events and activities that we do run will only serve the purposes of helping people discover Christ if they're undergirded by each of us building relationships with friends, neighbours and work colleagues and sharing Christ where we are – on our frontlines. A teaching series, followed through in home groups helped to reinforce that message and better equip people to live for Christ.



Opportunities for outreach come in various shapes and sizes. This year we have reviewed and revised our baptism preparation sessions, as we recognise the spiritual openness that often results from a new arrival in a family. Whilst few families integrate quickly into the Sunday services, links are often built through Jigsaw and the Parent and Toddler Group.

We ran an Alpha course again in the autumn term, which although small was appreciated by those who attended. We are exploring whether other material might be more appropriate for a course this autumn.

Open Church on Tuesdays has seen many people dropping in for a coffee and a chat and opening up about spiritual matters. In this gentle environment God is at work.

The Men's and Ladies' groups provide low key ways of building relationships and events such as C in the Park show that the Church is very much alive and kicking.

All of these things combined with those activities described on other pages act as resources for us as we seek to make Christ known and help others discover 'life in all its fullness.' How hungry are we to see that happen?

Paul Peterson | Associate Minister

Global mission links

Question: what do Christians Against Poverty, Children of Clarens, TEN, A Rocha, Open Doors, Chernobyl Childrens Line, Mission Aviation Fellowship, Mercy Ships, Church Mission Society, US, St James' Priory and The Children's Society have in common?



Answer: each of them has been supported and prayed for by members of Christ Church in the past 12 months.

The first ten are our nominated mission charities, with their own mission champion profiling their work, and the other 2 benefit from offerings at Harvest and Christingle respectively.

A few highlights

In July we welcomed a group of children from Clarens, together with their host families to a service at Christ Church. The children enjoyed getting to know our own children as they worked creatively together in a Connect session.

The Holly Fayre in December raised over £1,500 for our nominated mission projects.

As part of our tithe from donations made by church members to the building project and hall development we will be giving £9000 to TEN (formerly Eurovangelism) towards the building of a church in Ursoaia Moldova.

As a firm believer in meaningful mission links, it's so encouraging to hear of real practical engagement with mission initiatives. This spring Richard Bacon has been serving with Mission Direct and Ian and Mary Freestone working with a project in Zambia.

There's great anticipation of the youth visit to Ankole diocese in Uganda this summer and a team will be working with Clarens in the autumn.

All of these initiatives remind us of the myriad ways in which God is at work and of his call to take the gospel to all nations.

Paul Peterson | Associate Minister

Christians Against Poverty (CAP)

2012 was another very busy and fruitful year for Christians Against Poverty (CAP). During this period 34 clients were visited in their homes giving us the opportunity to offer support and speak about CAP as well as give testimony as to why the work exists. Within this group 29 clients had accounts activated.



During the year we rejoiced as 8 clients became debt free and at the end of the year 37 clients remain on the books. We continue to provide regular food parcels to new and existing clients thanks to the generosity of Christ Church and the amazing volunteers who deliver these.

We held three client events. The first on May 12th was a wonderful dinner in the Parish Hall with Susan Sadler, CAP's lead evangelist, as the guest speaker and a number of our clients were present. As a result of this evening we believe that ten people either renewed their commitment to the Lord or came into a new place of faith in God.

We had an end of summer BBQ on a lovely sunny day in September in the tranquil garden of Haven House to which many client families came. It was a delightful occasion with very good food, good conversations and a lot of 'seed sowing' taking place.

The coffee, cake and toy event at the end of November was also well attended and good supplies of gifts and toys were able to be taken by clients to assist with Christmas present giving.

Several befriender meetings have taken place during the year and each month on the first Saturday we have a prayer meeting in Haven House at 10 am. We also had a training session from Susan Sadler during the day of the May 12th event which was appreciated very much by those who came. We value highly our team of befrienders as they reach out to share God's love and to encourage clients in difficult circumstances.

Finally, to our family in Christ Church who support the work of CAP prayerfully and practically, thank you and God bless you richly.

Hilary Kitchen | CAP Centre Manager

Buildings, finance & administration

Repair work on the main church building has continued this year. We have had a substantial clear out as part of taking the annual parish church inventory. Many things no longer used have either gone to good homes or been disposed of, so our storage areas are now more accessible, and the crypt has also been cleared. Roof repairs have continued, to ensure we are watertight, with repairs to the corridor skylights and the chancel roof. The flat roof over the crèche / prayer room will need replacement in the medium term, but for now has been patched. The main drains have been inspected with remote cameras to ensure we are not suffering from ingress of tree roots.



The Church Centre at Quakers' Road has upgraded the sound system following electrical re-wiring last year. This together with a new organ, donated by a relative of a church member, means the sound of worship is clearer and perhaps louder than the past few years. The management committee plan to only undertake essential repairs in the coming year but possibly upgrade the toilets during 2014.

Haven House has received a makeover to the front of the building following a large donation for that purpose. The PCC now has an agreement with the Trust responsible for the building, to fund the running costs in lieu of rent for our staff to be accommodated there.

Everyone will have seen the roof refurbishment at the Parish Hall in North Street, which has now finished and creates a lighter, warmer and most importantly drier environment for everyone. The second part of the project, the creation of the Youth Hub, is now out to tender with work scheduled for the summer holidays. Finance is dealt with in the Financial summary, but it is pleasing to note that income from Hirers of the two halls, is such that both can manage their own maintenance and asset management programmes, with a small surplus being available for the wider General Fund.

Our administration services remain effective despite being dependent on such a small number of paid staff and we are extremely grateful for the voluntary help received throughout the year. This year we have been able to develop and implement a full Health & Safety Policy for our staff and buildings, adapting a model suggested by our insurers.

Bill Robbins | Chair of Operations Management Group



Church development

During 2012, architects, planners, conservationists, engineers and historians have been working together with our Buildings Team, PCC and the Diocesan Advisory Committee to pull together detailed designs that will breathe new life into our church building. Following the extensive consultation exercise at the start of 2012, revised outline plans were developed and shared with the church in July. These met with a very positive response. Work has now progressed so that we are at the point of making formal planning applications. Prior to this there will be another presentation to the whole church.



A huge amount of work has gone into the process to date, and it has taken a long time, but it will be worth it. We look to God with expectation and faith for the resources to enable this very special building to become all it can be for this and future generations. It is actually going to happen!

Jo Vickery | Vicar

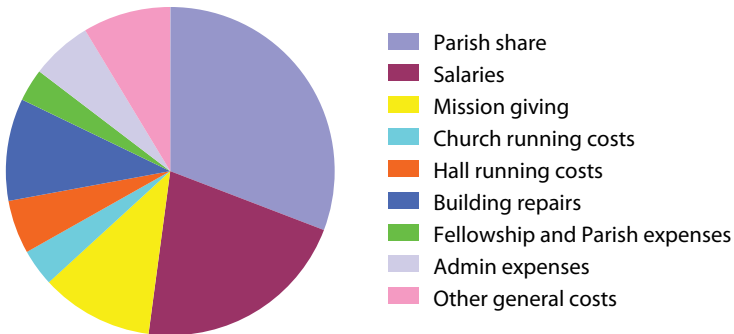
Financial summary

Financial report for the year ending 31st December 2012
PCC of Christ Church, Downend, Bristol.
Registered charity number 1131689



If I thought that 2011 was a roller coaster of a year, then 2012 upped the ante by a considerable margin. Your Parochial Church Council Trustees, (PCC), and Operational Management Group members, (OMG), spent considerable time during their meetings considering the Church's financial matters. We had the following major items to contend with during the year:

- A considerable budget deficit in the General Fund.
- The replacement of the Christ Church Parish Hall roof, and the redevelopment of the west end of the hall into a Youth Hub.
- The ongoing planning for the redevelopment of the church building.
- The transfer and disposal of the Traidcraft Shop and Fund.



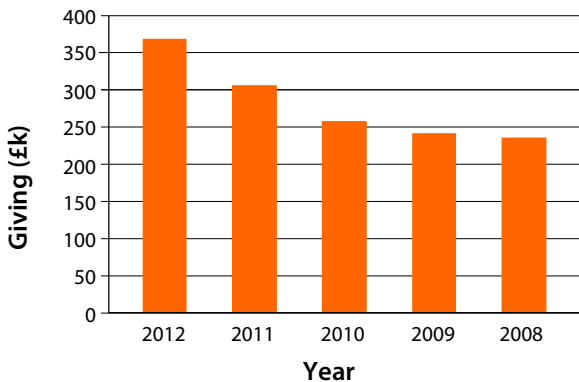
Breakdown of expenditure: 2012

How did we do?

- The General Fund ended up with a surplus of just over £6K. This was due to several factors – a steady increase in monthly giving from church members; £9K raised for the General Fund on the gift day/season of sowing in October; very generous, one-off giving from some church members in December; and a grant from the Sir Stephen Cave Charity of £6K in respect of the Family and Youth Workers.
- Even though we lost the services of our professional fund raiser early in the piece, he, plus the Rev. Paul Peterson/Bill Robbins team have secured

various grants for the hall refurbishment/redevelopment. The largest to date is the £49K SITA Trust grant. The second largest, championed by Diane Paddon, is the £10K from the local Parish Council. Also, we have received very generous one-off gifts from church members, and we also raised/hold pledges for £34K from the aforementioned gift day. The youth members of our Church have also been busy with several fund raising events. The outcome of all this activity meant that work could commence on the hall roof early in January 2013.

- After the feedback from our church members on the plans for the redevelopment of the building, our architects have been incorporating various alterations to the plans, and working towards obtaining the relevant planning permission. The generous, one-off donation of £49K made during the year, has ensured that we can meet the costs associated with this work.



- With the redevelopment of the Parish Hall, we had the problem of what to do with the Traidcraft Shop. Happily, a new home was found for this at the Pendennis Evangelical Church Charity. This has resulted in the Fund value of £4,029.45 being transferred to this Charity. This made-up as follows:

Stock	£2,239.35
Bank balance	£1,775.10
Cash in hand	£ 15.00
	<hr/>
	£4,029.45

- Through all the worry, planning and debating, your PCC/OMG members are continually asking for the power of the Holy Spirit to bear us up, and guide us in our deliberations. I thank the mighty God, whom we seek to serve, for all the blessings he has showered upon us during the year, especially in the form of the generous giving from our church members.

What does 2013 hold for us?

General Fund – The OMG/PCC has passed a deficit budget of £19.5K for this year. This takes into account a budgeted increase of 8.75% on member's donations over last year's giving, (based on an encouraging upward trend in the last three months of 2012), and a grant of £8K applied for and promised from the SS Cave Charity. We will, of course, monitor our giving very carefully, and we hope that the Giving4Life team's deliberations will help increase the efficiency of our giving. If, however, it is deemed necessary, we will have to hold a gift day later in the year to restore the situation. If not, then any deficit on General Fund will have to be financed from our reserves.

The work on the roof of the Parish Hall is progressing well, and is forecasted to be finished on time, and on budget. With the donations/pledges/grants already received, we think that approximately a further £50K will need to be raised to complete the work on the Youth Hub. This is an approximation because the tenders for the work do not go out until April.

- Although many hoops still have to be jumped through to reach this goal, the Church Development Fund has enough funds to complete the work required to obtain the necessary planning permissions.
- We have secured £24K worth of funding for the CAP Fund over the next three years, so that it can continue the valuable ministry it is engaged in.

All of the above provides us with a great challenge to continue and expand the ministry of this church, especially during the tough economic period we are experiencing at present. We continue to put our trust in the Lord, and that he will provide for all our needs, and also that he will guide us along the right path, so long as we continue to be a prayerful and faithful Church.

As usual I would like to take this opportunity to thank all of those who serve most faithfully in supporting the financial function of our Church. This includes those who record and bank the contents of yellow and green envelopes, as well as those who do the same for the loose plate collections; to the preparation of the monthly fees returns; monthly payrolls and the work of the Subsidiary Fund Treasurers. We must thank Chris Johnson for the work he has done as Planned Giving Officer, compiling and submitting the monthly gift aid returns. As he and Helen plan for her upcoming ordination, he has felt it wise to ask for this task to be taken on by someone else. I am delighted to say that Peter Misselbrook has volunteered to take this on. I would like to end by making a special thanks to

Janet Howe. She has been producing, on her own, the Traidcraft Fund accounts for the last two years now. She has lifted a heavy burden from my shoulders at a particularly busy time of year. I know she will be greatly relieved that this burden has now been lifted from her shoulders, as well.

Ray Hackney | Honorary Treasurer to the PCC

PCC of Christ Church Downend summary balance sheet at 31 December 2012

	2012	2011
	£	£
Fixed assets		
15 Glendale	104700.00	104700.00
Tangible Fixed Assets	<u>104700.00</u>	<u>104700.00</u>
Current assets		
Fair Trade shop stock	0.00	2456.75
Debtors and prepayments	21153.92	17109.67
Short term deposits and bank accounts	129227.77	50634.30
CBF deposit account	27591.45	28481.67
Cash in hand	434.40	959.31
	<u>178407.54</u>	<u>99641.70</u>
Liabilities		
Trade creditors and accrued liabilities - amounts falling due within one year	24319.59	24990.66
Net current assets	154087.95	74651.04
Liabilities		
Amounts falling due after one year - re: loan from the Diocese for Glendale	45000.00	45000.00
Net assets	<u>213787.95</u>	<u>134351.04</u>
Represented by:		
Unrestricted funds		
General	35666.15	29481.84
Asset management plan	4380.41	731.66
Christ Church Fellowship	1435.42	1009.84
Discretionary fund	473.20	59.54
Leadership fund	658.20	0.00
Organ fund	1656.55	1511.55
Parish Hall AMP fund	7706.81	2508.77

Parish Hall general fund	1664.90	1941.38
Church Centre, Quakers Road AMP fund	1188.59	3242.00
Church Centre, Quakers Road general fund	1962.76	1210.66
Traidcraft Shop	0.00	4628.87
Youth ministry fund	414.49	349.11
Sub-total	<u>57207.48</u>	<u>46675.22</u>

Restricted funds

CAP	11664.54	22491.11
Development of church buildings	29513.42	1944.92
Development of Parish Hall - tithed	26264.56	0.00
Development of Parish Hall - non-tithed	11442.40	0.00
Flower fund	742.59	217.70
Gift fund	1310.06	553.34
Glendale housing - capital	59700.00	59700.00
Haven House AMP fund	1103.22	0.00
Mission	14684.93	2614.00
Parish weekend away	154.75	154.75
Sub-total	<u>156580.47</u>	<u>87675.82</u>
Total funds	<u>213787.95</u>	<u>134351.04</u>

Approved by the OMG/PCC on 20/03/2013, and signed on their behalf by Revd. P.J. Peterson, Associate Minister



PCC of Christ Church, Downend, Bristol
Statement of financial activities
for the period from 01/01/2012 to 31/12/2012

		Restricted funds		Total funds	Prior year total funds
<i>Incoming resources</i>					
Incoming resources from generated funds					
Voluntary income	224164.73	145385.34	0.00	369550.07	308097.14
Activities for generating funds	48020.03	9245.44	0.00	57265.47	50169.89
Investment income	462.22	0.66	0.00	462.88	410.59
Incoming resources from charitable activities	8402.97	640.00	0.00	9042.97	8170.81
Other incoming resources	0.00	0.00	0.00	0.00	25.00
Total incoming resources	281049.95	155271.44	0.00	436321.39	366873.43
<i>Resources used</i>					
Cost of generating funds					
Cost of generating voluntary income	1492.80	829.70	0.00	2322.50	690.72
Fundraising trading cost of goods sold and other costs	6810.17	0.00		6810.17	7394.62
Charitable activities	246236.63	99802.68	0.00	346039.31	378922.68
Governance costs	1712.50	0.00	0.00	1712.5	2110.60
Total resources used	256252.10	100632.38	0.00	356884.48	389118.62
Net incoming / outgoing resources before transfer	24797.85	54639.06	0.00	79436.91	(22245.19)
<i>Transfers</i>					
Gross transfers between funds - in	72159.12	35553.74	0.00	107712.86	0
Gross transfers between funds - out	(86424.71)	(21288.15)	0.00	(107712.86)	0
Net incoming / outgoing before other gains / losses	10532.26	68904.65	0.00	79436.91	(22245.19)
Other recognised gains / losses	0.00	0.00	0.00	0.00	0

Gains / losses on investment assets	0.00	0.00	0.00	0.00	0
Gains on revaluation, fixed assets, charity's own use	0.00	0.00	0.00	0.00	
Net movement in funds	10532.26	68904.65	0.00	79436.91	(22245.19)
<i>Reconciliation of funds</i>					
Total funds brought forward	46675.22	87675.82	0.00	134351.04	156596.23
Total funds carried forward	57207.48	156580.47	0.00	213787.95	134351.04

christchurchdownend.com
facebook.com/groups/christchurchdownend



When you have finished with this document please recycle it or better still pass it on to a friend.