

# Christ Church Monthly News

...what's on and when, how to join in and what to pray for... **September  
2024**

---

---



## Worship & Prayer

Prayer is a very important part of our life as a church community. One Church One Day 24 hours of prayer and the Prayer and Praise time has played a huge role in this, and we are grateful to Diane and Gary for leading this ministry. Now that they have stepped down, we would like to review and plan for prayer to continue to flourish.

Please let Anita know your thoughts about what prayer opportunities you would like to see in the future.

Send ideas to [anita.dobson@christchurchdownend.com](mailto:anita.dobson@christchurchdownend.com)

## Coming Up...

**Sunday 1st September:** Education Sunday, all age service

**Sunday 8th September:** CAP Sunday

**Sunday 15th September:** Celtic Service 6.30pm

**Sunday 29th September: No 10.30am service** due to Lee Abbey. Join us for a 'combined service', 9.15 at Quakers Road Church Centre

**Sunday 6th October:** Prayer with the BSI 6 churches about food poverty, as we look wider to bless the community, 6.30pm Christ Church



# Opportunities to Serve



## Vacancy

### PCC Secretary

We are looking for a new PCC and  
Standing Committee Secretary

Roles will include:

- attending approx 6 PCC meetings/year
- issuing agenda
- typing minutes
- linking with the Diocese where necessary

If you are interested, please speak to  
Dan or Paul



Join our Schools' and  
Children's Ministry Team for  
September!

Children's work in church  
Prayer spaces in schools  
Experience events in church  
Jesus out of the Box in schools  
Assembly in schools' puppet team

To find out more and sign up, contact Julie Gardner on  
[julie.gardner@christchurchdownend.com](mailto:julie.gardner@christchurchdownend.com)



**Learning to Live the Life**  
CHRIST CHURCH DOWNEND

Christ Church Downend

## Warm Spaces Cafe

**Thursdays 11am - 1.30pm**

**Lunch served from midday**

A warm welcome throughout the year!

**Dementia Friendly Café**  
every third Thursday of the month

games - light lunch - space for carers

**Starts back 5th September**



**Learning to Live the Life**  
CHRIST CHURCH DOWNEND

VINTAGE

# Adventure

**24TH SEPTEMBER**  
**2PM - 3.30PM**

**CHURCH CENTRE**  
**QUAKERS ROAD**  
**BS16 6NH**

'A COMMUNITY EVENT FOR OLDER PEOPLE'

**This month's theme**  
Harvest for different generations  
With a visit from Bromley Heath Infants  
[www.christchurchdownend.com](http://www.christchurchdownend.com)



BS16 Churches Together

# Harvest Prayer Event

**Sunday 6th October**  
**6.30-7.30pm**

**Christ Church Downend**

Come along and pray as one church in the BS16 postcode for the issue of food poverty - locally, nationally and globally.

We will pray specifically for the work of the foodbank at Resound church and the work of **CAP** in Downend.

**Longwell Green Orchestra** 🎵🎸🎷

## Concert for Kumi, Ticket £8

**Saturday 26 October**  
**Doors 7:00 for 7:30pm**  
**At Christ Church, Downend**



Enjoy an evening of classics and tunes from the musicals

**Raising funds for Mission Direct projects in Kumi Uganda. Wine, tea and cake on sale**

Advance tickets from Jan Bacon  
[janet.bacon@missiondirect.org](mailto:janet.bacon@missiondirect.org)



**Mission Direct**  
Building hope, bringing change

Parking behind Parish Hall 57 North St, Downend, Bristol  
BS16 5SG.



*Join us for our*  
**Church**  
**Weekend Away**

**Lee Abbey Conference Centre Devon**

27th - 29th September 2024

**Full Adult, Youth and Children's Programme**

**Last few rooms remaining!**

**Double or Twin Ensuite £190pp**

**All Non Ensuite type rooms £170pp**

**Speak to Dan/Paul to book**

# Discipleship

Contact Anita  
[anita.dobson@christchurchdownend.com](mailto:anita.dobson@christchurchdownend.com)

 **Rhythm of Life**



**September**  
Intercession

We continue with our daily challenge to pray for one of your frontlines, but this month we invite you to consider, Who could I pray with? Perhaps you could ask Christian neighbours, colleagues or friends to meet up regularly to pray for a particular place or group. Speak to Anita if you would like ideas about how to do this.

Our Church Library has had a facelift! Do browse and borrow books to widen and deepen your faith.

Be challenged, inspired and well fed.

The library is near the Welcome Desk.



---

---

# Children & Families

Contact Harriet  
[harriet.jolly@christchurchdownend.com](mailto:harriet.jolly@christchurchdownend.com)

**Connected Children:** Get your memory verse sheets ready for 8th September. We will be looking back at these and giving out any certificates you are waiting for!

## Coming up...

### Sunday 1st September

Education Sunday

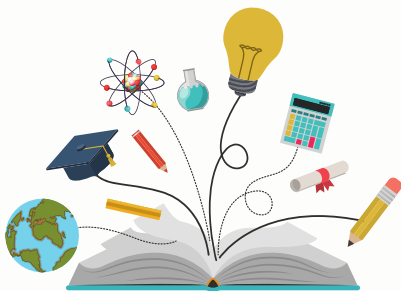
All Age Service

*followed by*

Family BBQ at The Vicarage

straight from the 10.30am service

Food provided - but BYO desserts and drinks!





# Young People

**Contact Paul**

[paul.peterson@christchurchdownend.com](mailto:paul.peterson@christchurchdownend.com)

As we enter a new era in our youth work at Christ Church, we would love to hear from anyone interested in joining the Youth team. If you enjoy working in a team, love young people and want to help them grow and flourish in faith, please contact Paul Peterson or Julia Watts.

There will be a meeting for young people and their parents in the Youth Hub on Sunday 1st September from 6.30-8pm. We'll all start together and then split into separate youth and parent groups as we explore the way ahead together. Do join us if you have children in Year 6 or above. Light refreshments provided.

Do you have a pastoral need?

Care ~ Spiritual Support ~ Prayer

[carecoordinators@christchurchdownend.com](mailto:carecoordinators@christchurchdownend.com)

0117 9089867

---

---

[www.christchurchdownend.com](http://www.christchurchdownend.com)



Christ Church Downend



christchurchdownend