



Learning
to Live the
Jesus Life

CHRIST CHURCH DOWNEND



CHRIST CHURCH DOWNEND

Annual Report 2026



Contents

A few words from the Vicar	3
About Christ Church Downend	4
Church structure	5
Parochial Church Council (PCC)	6
Churchwardens	6
Safeguarding	7
Worship	8
Mission in the community	9
Bubble Church	10
Discipleship	11
Pastoral care	11
Children	12
School Chaplaincy and Church Schools	13
Youth	14
Finance	15

A copy of the full church accounts will be made available in advance of the APCM.

Christ Church is the Anglican (Church of England) Parish Church of Downend, serving a population of around 25,000 people including those living in the communities of Staple Hill, Oldbury Court, Downend, Blackhorse, Bromley Heath and part of Emersons Green. It is part of the Diocese of Bristol, Church of England.

Our vision is to become a vibrant community that is 'Learning to Live the Jesus Life'.

A few words from the Vicar



Dear Church Family,

As I sit here writing this annual report, we are in the midst of preparing for our summer sermon series on Praying the Psalms. Psalm 9:1 echoes in my mind: "I will give thanks to you, Lord, with my whole heart; I will tell of all your marvellous works." It is a moment to pause and give thanks for God's faithfulness to us as a church community. This year has been marked by growth, service, and a deepening sense of God's presence among us. God is good.

One of my greatest encouragements has been the continued commitment of so many to the life of the church. Week by week we gather for worship, prayer and fellowship, and it has been wonderful to see people of all ages engaging with faith - through Sunday services, small groups, children's and youth ministry, and informal fellowship.

'We have continued to place discipleship at the heart of our life together ...'

Week by week, dozens of people serve in countless ways as we seek to make Christ known: in care homes across the parish, through Experience events and prayer spaces, at Warm Space, through CAP debt advice work, Bubble Church, Vintage Adventure, and the Mother's Union, among many other ministries.

It is extraordinary to see the people of God faithfully serving and loving. Every contribution matters, however small it may seem; everyone has a part to play. That is the beauty and joy of the Body of Christ working together for the glory of God. I am deeply grateful for the generosity of time, money and talents that enables us to sustain and

grow our mission and ministry here at Christ Church.

As we reflect on the past year at Christ Church Downend, we do so rooted in the words of Jesus in John 10:10: "I have come that they may have life, and have it to the full." This continues to shape our vision - learning to live the Jesus life: a life not merely endured, but lived in the superabundance of Christ. This is not about material abundance, but the richness of life found in Jesus himself. As Paul reminds us in Ephesians 3, God is able to do immeasurably more than all we ask or imagine, by his power at work within us. That has been our story this year.

Over the past year, we have sought to live out this vision through our three key priorities: growing deeper, wider, and younger.

Growing deeper

We have continued to place discipleship at the heart of our life together, encouraging one another to grow in our love for Jesus. Through our sermon series in Mark, we have reflected on Jesus' example and how we are called to serve and live like him. Our study of the Nicene Creed has reminded us that what we believe shapes how we live, leading us into deeper wonder, worship and obedience. As we put Jesus' teaching into practice, we are being shaped more fully into his likeness

Going wider

If we have encountered the fullness of life in Jesus, we naturally long for others to know it too. It has been deeply encouraging to see growth here. This year, 12 guests engaged with Alpha, and through a range of ministries - from Sunday services to Warm Space cafés, Tea & Toast, Bubble Church and Vintage Adventure - we have created welcoming spaces where many have encountered God's love.

Our developing school chaplaincy work has been particularly exciting. We are now working regularly in seven of the nine schools in our parish. Through assemblies, Experience events, prayer spaces and pastoral presence, we are building meaningful relationships and sharing the hope of Jesus with children and young people.

Growing younger

Alongside this, we recognise the importance of investing in the next generation. Through children's ministry, family events, and outreach such as Tea & Toast and our family fun day, we are seeking to connect with young families in our community. Our developing links in Bromley Heath, including early steps through school partnerships and community events, are a significant part of this vision. This is not simply about sustainability - it is about faithfully sharing the life of Jesus with those who will shape the future.

As we look ahead, the invitation remains: to step into the fullness of life Jesus offers. To pray, to invite, to serve, and to give. To be a church that is growing deeper in discipleship, wider in mission, and younger in generation.

Thank you for your faithfulness, your generosity, and your willingness to be part of what God is doing here. Together, we are learning to live the Jesus life—and trusting that God will do "immeasurably more than we can ask or imagine" (Eph 3:20).

With every blessing,

Dan Watts

About Christ Church Downend

Christ Church Downend, Parish Office, 57 North Street, Downend, Bristol. BS16 5SG
0117 908 9867 | parishadmin@christchurchdownend.com | www.christchurchdownend.com

Clergy:

Rev Dan Watts (Vicar)
Rev Paul Peterson (Associate Minister and Chair of PCC)
Rev Chris Dobson (Assistant Minister)
Rev Anne-Louise Critchlow
Rev Philip Rowe

Lay Minister:

Alison Rowe and Anita Dobson

Church Wardens: Bryan Ashton and Maggie Nichols

PCC Elected Members from May 2025

Katie Allen
Richard Bacon
Roger Cholmondeley
Julian Cox
Sally Green
Lynda Lloyd
Debbie Pastwa
Andy Pound (chair of staffing committee)
Nigel Stowe (vice chair of PCC)
Mark Tanner

PCC Minutes Secretary:

Hilary Stadden

Deanery Synod: Alison Rowe and Maggie Nichols

Honorary Treasurer: Nick Gale

Parish Safeguarding Officer: Laura Green

Committee structure: A Standing Committee consisting of the Vicar, Associate Vicar, Wardens and Vice Chair of PCC sets agendas and deals with business between PCC Meetings. The PCC has delegated responsibilities as follows: The Giving 4 Life team oversee the church's finances and the Wardens take responsibility for general building issues. A personnel subgroup

seeks to ensure good practice in the recruitment and oversight of staff and other leaders in mission. A Halls Committee oversees the fabric and function of the Parish Halls. In addition, the Ministry Leadership team works with the Incumbent in setting and reviewing mission priorities and their effectiveness.

Other elected posts and office holders

Health and Safety Officers:

Church Wardens

Electoral Roll Officer: Beth Mullins

Deputy Warden (Church Centre

Quakers Road): Sally Green

Safeguarding Administrator:

Beth Mullins

CAP Centre Manager: Rosie Brydon and Sally Grier

Parish Administrator: Beth Mullins

Finance: Joanne Searle

Christ Church Building Manager:

Maggie Nichols

Verger: Andy McNeill

Ministry Leaders (as at 1 May 2026):

Communications: Beth Mullins and Julia Watts

Discipleship for all ages:

Anita Dobson

Mission in the Community:

Paul Peterson

Community Chaplain: Anne-Louise Critchlow

Pastoral Care: Philip Rowe and Care Co-ordinators Team

Worship/Leadership Development:

Dan Watts

Children: Harriet Jolly

Youth: Paul Peterson

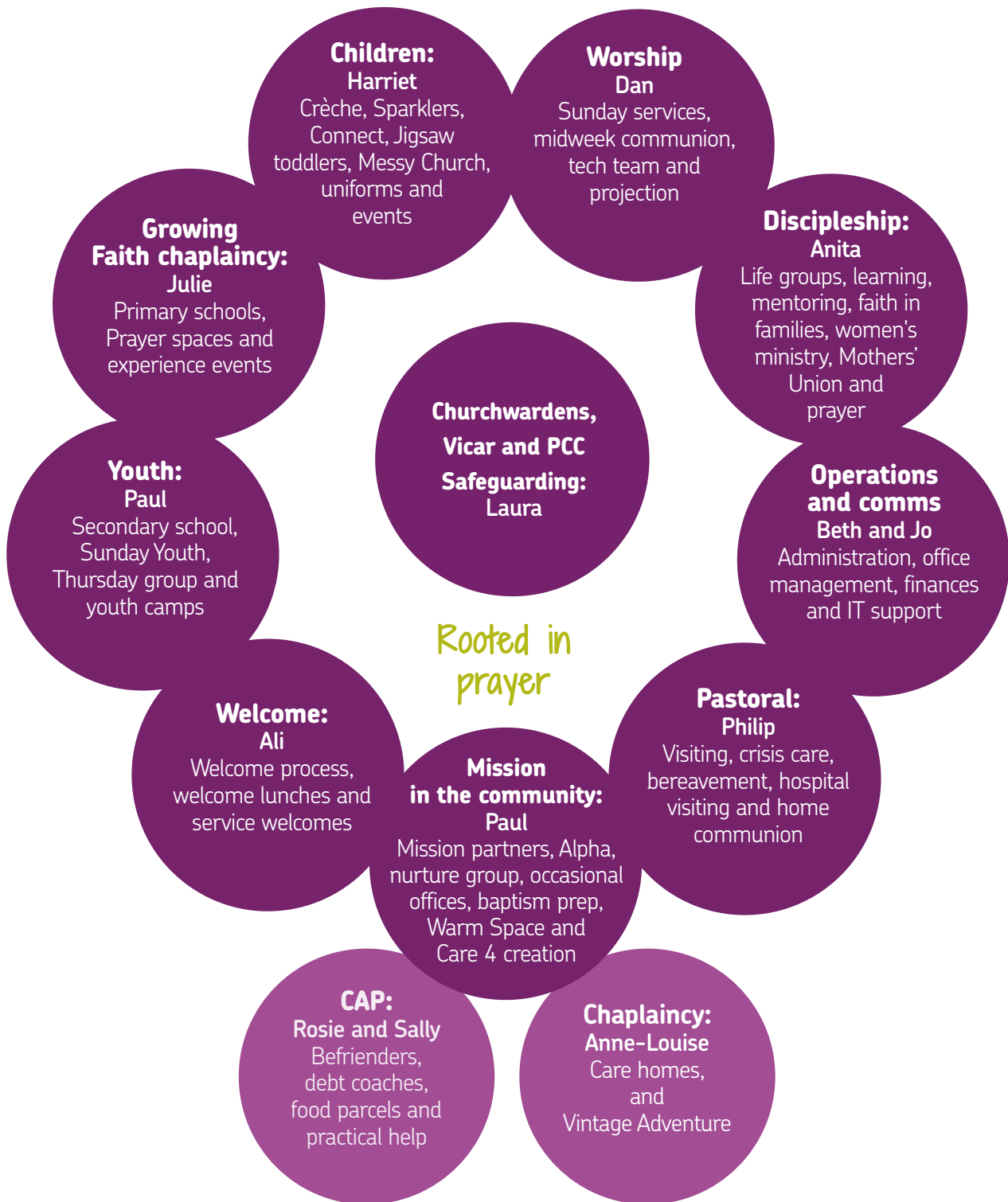
Schools Ministry: Julie Gardner

Welcome: Ali Rowe



Church structure

(as at 1 May 2026)



Parochial Church Council (PCC)

The Parochial Church Council (PCC) held six meetings face-to-face during 2025/2026.

- Each meeting began with some time in prayer, reflection and discussion
- Following this a number of proposals were approved including various items relating to buildings, finance, mission support, safeguarding, Giving 4 life and staffing matters.

Finances

- The budget and the 2026 Parochial fees were set and approved
- Our parish Share contribution for 2026 was set at £100K, with an aspiration to increase this to £110K if funds allow
- We have received grants towards our growing younger ministries. The

youth worker post is yet to be filled.

Buildings

- The Church Wardens submit regular reports and expenditure was agreed on various items to ensure our buildings are well looked after
- A joint Parish Halls Committee meets regularly and reports back to the PCC
- The heat pump project for the Parish Hall was discussed, approved and completed. The PCC are very grateful to James Gardner for leading on this.

Safeguarding

- Laura Green our Parish Safeguarding Officer reports back to the PCC at each meeting with various Safeguarding reports. Safeguarding

Policies have been reviewed and updated.



Human resources

- Anita Dobson was licenced to the team this year as an LLM
- Various policies have been approved and implemented
- Roles within the Parish Administration Team have changed and were discussed and approved.
- The PCC have agreed that Paul Peterson be given a three month sabbatical in 2027 subject to diocesan approval.

Hilary Stadden (PCC Secretary)

Churchwardens

Well we've had a few months when there has been no scaffolding up at the church but you will have noticed that there is damp in the upstairs north wall, so the scaffold will have to go up again, once we have found the source. We recently hired a building surveyor to check the north wall by way of a cherry picker. He also checked other parts of the church roof. His 20 page report has just landed, so we will see what he suggests and where it takes us.

We've recruited three extra Assistant Wardens and that helps spread the load on Sunday mornings. We take this opportunity to thank all of our Assistant Wardens for their tireless work and dedication at the Thursday Communion, Sunday morning and Celtic evening services at Christ Church. We also thank Sally Green and her faithful team at the Church Centre, Quakers Road - they do a wonderful job.

To be honest we couldn't manage without these wonderful people.

One of our warden roles is security, we have CCTV systems at the church and parish hall. We have had a couple of break-ins at the church during the year, and although nothing much was taken the mess they leave behind and the paperwork involved after is very tedious. We are hopeful the Home Office will give us some funds to fix security blinds to the Garden Room and office windows and the Garden Room door. It would be very helpful if our church congregations could be watchful, please report anything suspicious to the wardens.

Health and Safety is another area that we look after. We are not professionals but try to keep up to date with current regulations. If there is anyone who is qualified and would like to share the



load with us please let us know.

With many blessings and thanks to everyone who help in so many ways. We are all Servants of God together.

Bryan Ashton and Maggie Nichols





Safeguarding

It is a privilege serving the church as Parish Safeguarding Officer (PSO) and working with the PCC and heads of ministry to ensure that we are a safe space for those both inside and outside of the church family.

I am grateful for the support from both the leadership team and the diocese safeguarding team as I carry out my role.

We are working through the Parish Dashboard to ensure we are meeting the mandatory safeguarding requirements, set by the Church of England. This is a traffic light scoring system, to make it easier to see quickly where we still have work to do. We generally have a lot more green ticks than this time last year, meaning that we have policies and procedures in place, and the PCC is involved in safeguarding work. We need to focus on those working with children, young

people and vulnerable adults carrying out the required training and ensuring all the activities that we do as a church are as safe as possible. This is not just about ticking boxes but growing the whole culture around safeguarding. In

**'This is not
just about ticking
boxes but growing
the whole culture**

...'

a church of our size, I need everyone's help, eyes and ears to help to protect vulnerable people.

If you have any questions or concerns, please feel free to email me at safeguarding@christchurchdownend.com.



There is also a cause for concern form on the church website under the safeguarding tab which is a quick secure way of sharing information. Please share any concerns, even if you don't know all the details. Often in safeguarding there are small bits of information that build up to a bigger picture. As PSO, part of my role is to collect information and build that bigger picture and decide what needs to happen next, I can't do this without others sharing concerns with me.

Laura Green

Parish Safeguarding Officer

Worship

We are blessed to be able to worship in many different ways at Christ Church, from traditional to contemporary; from reflective to interactive; from quiet searching to exuberance. This is because God's character has many facets and because we are all unique. We can worship in different ways, expressing ourselves honestly and humbly before God according to our personalities, and in every season of life.

One thing all our services have in common: a desire to connect with the living God. We tend to follow a common pattern: to be welcomed and to align our hearts to God; to confess where we have drifted away; to learn and grow together through studying the Word together; and by sending each other out to "live and work to His praise and glory!"

Sunday services have been blessed by inspiring sermon series such as our focus on the Nicene Creed, on repentance through Nehemiah and our Spiritual Health Check.

At the Church Centre at Quaker's Road, our traditional style service has continued to bring comfort and encouragement under the leadership of Anne-Louise, and the community there have walked together through the joys and sorrows of life.

On Thursdays the communion service has gone from strength

to strength, with a warm atmosphere of friendship and concern for one another. Love is often expressed through coffee and cake!

'God's character has many facets and because we are all unique ...'

Our Celtic service each month has provided time to be still and thankful at the start of a new week, using the beautiful liturgies created by Barbara Tooby.

Bubble Church is growing in strength as families from Jigsaw, schools work, baptism contacts and Tea and Toast have joined church families at this high energy, fun way to explore worship with young children.

On Sunday mornings at Christ Church we have developed an effective All Age café style service for special

occasions and have seen the young people growing in confidence in leading services and taking part in the music.

Worship has also been happening at Open Church, in our youth and children's groups and in life groups as well as on Sundays. And, of course, our daily lives are a sacrifice of worship and praise as we live like Jesus wherever we've been placed, with thankful hearts.

So many people work hard to make things happen for all our services, both in person and online, but ultimately, no matter how hard we work, we can only set the scene. What goes on between God and his people is up to each one of us: to come with our hearts prepared to be inspired, our minds prepared to be enlightened and our spirits ready to be filled with his presence. The Lord is ready and waiting!

Anita Dobson



Mission in the community

Jesus calls his followers to 'go into all the world' and at Christ Church that starts local and spreads out to distant lands. It's expressed through our everyday witness in our homes, work places and communities and through the organised activities of the Church where so many give freely of their time and energy.

Here are just a few examples:

Warm Space: Maggie Nichols
It's been very encouraging that Warm Space weeks with The Music Train have regularly increased their numbers. Their financial help with this was very difficult over the beginning of the year, but more settled now as they are now linked with Paul's Place. The quieter weeks have increased in number and those coming really enjoy the company, food and warm space. Caroline Churchman is helping with Dementia Friendly weeks, which is very useful. Twice a month one of the clergy gives a Thought for the Day just before lunch which has been very well received.



Anna Chaplaincy: Anne-Louise Critchlow
There are two ways in which the chaplaincy to older people has been going forward in the last twelve

months, as well as keeping our normal activities going.

Holiday at Home in July 2025 took a real step forward in terms of contacting people. We were at full capacity with about 65 people present. All the events were vibrant with Amanda's solo singing and Belinda's Thought for the Day particular highlights.

Vintage Adventure has increased its links with Bromley Heath Infants School and Wrigglypeeps pre-school, putting on events connected with the history of Bristol, Mothers' Day and Spring. Our Schools' Chaplain, Julie Gardner, and Anne-Louise Critchlow, our Anna Chaplain have been regularly joining forces to produce events which are both enjoyable and spiritually meaningful for our children. There is some evidence that this is beneficial to the community in advertising our Bubble Church outreach.

There are a mixture of large groups (eg. at Avonmere Care Home) and smaller groups (eg. at Edgcombe Lodge), which are appreciated in different ways. For many of our homes and sheltered housing groups it is the only opportunity which residents have for spiritual nourishment and, as such, it feels very worthwhile. Thank you for your support.

Christians Against Poverty:

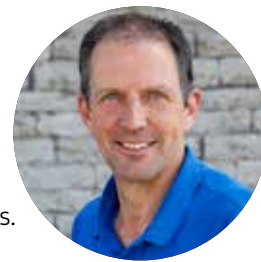
Rosie Brydon and Sally Grier - CAP Centre Managers

The CAP Debt Centre continues to serve our community and respond to the increasing complexity seen in our client situations. We have taken twenty-nine new clients over the last year and seen six clients become debt free. Each appointment is an opportunity to come alongside people in a non-judgmental way, empower them to make good choices for themselves and to share something of God's love for them. We have increasingly felt the importance of recognising small moments where

God seems to be present in people's lives.

A CAP prayer group has been a way we can link clients with the wider congregation through specific prayer requests.

Through the generosity of the church, we were able to meet urgent needs for some clients and school families in crisis. This included providing basic furniture including a bed, a bed frame, a sofa, a washing machine and two cookers. Asda deliveries were ordered for some and school camp was paid for a child whose family were in crisis. It is hard to convey the gratitude for these gifts and there is



'... we were able to meet urgent needs for some clients and school families in crisis.'

no doubt that there is a sense of being blessed by the wider church family for those who receive them. Volunteer befrienders provide ongoing support to some clients and other volunteers have delivered food parcels and supported us on visits. Forty-nine Christmas Hampers were delivered to clients and school families this year.

Our money coaching training has enhanced the support we are able to give all our clients, and we ran a first money course at the Vassal's Centre last year. Our links with the local schools with the support of the school chaplaincy team, as well as other local organisations such as DHI and the Vassal's Centre continue to develop and enable us to operate as a part of the network of support around some of our clients.

There has been a Debt centre

here since 2007, making it one of the longest serving centres in the UK. This gives testament to the generosity of this church and the commitment to serve those in our wider community. There have been many changes over this time – Sally and Rosie are now job-sharing the Centre Manager role and we were sad to say goodbye to Karen Scorer in November. We are adjusting to reorganisation within CAP at a national level and we are hoping to expand the team and look forward to seeing what God brings to us over the next year.

Alpha

Our Alpha Course in the autumn term attracted 10 guests with ages ranging from 17 to 70+. Having such a wide range of ages and life experiences led to some great discussions and several people took significant steps forward in their Christian faith journey. Some of them have started worshipping

regularly at Christ Church or joined in with the Bible Course on Sunday evenings.

Mission Partnerships

CAP of course is our local Mission Partner, but we continue to support and engage with the work of Mission Direct in Uganda through Jan and Richard Bacon; Transform Europe Network whose head office is just up the road in Bradley Stoke; Haven Home India; CMS through Ben and Katy Ray in Arusha, Tanzania; Open Doors serving the Persecuted Church; Iona Clark’s ministry with students through Circuit Riders; and the deanery links with Uganda. We continue to tithe (give 10%) of our donated income to support these wide ranging and impactful projects around the world.

Paul Peterson



Bubble Church

Bubble Church has grown steadily over the last year with new families coming along from both Tea & Toast (Tuesday after school drop in at the Parish Hall) and from Jigsaw (Friday morning Toddler group) and from connections made through the Family Fun

Day and through the School Chaplaincy work with the Bromley Heath schools and pre-schools.

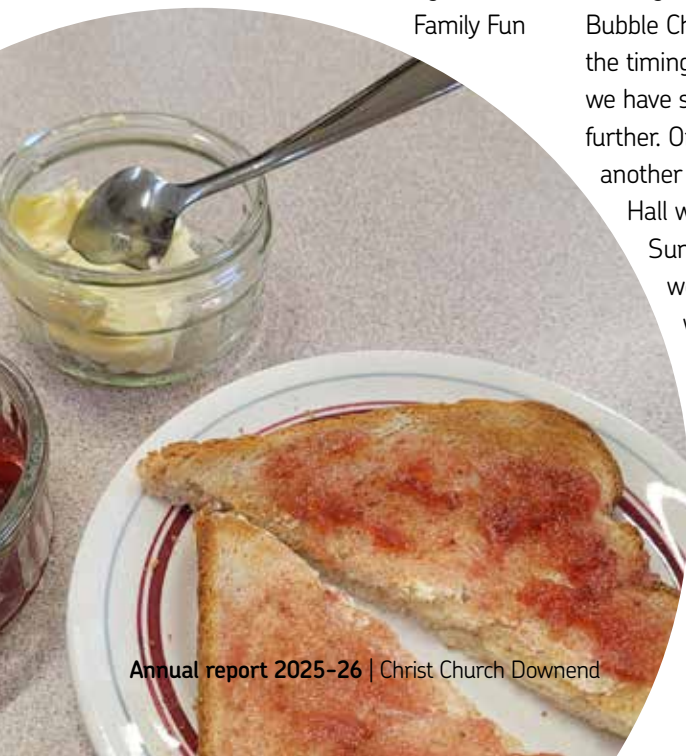
There are a number of core church families that help to run this expression of church as well as a large number of less regular families that attend. The Bubble Church Team have reflected on the timing, frequency and location as we have sought to develop and grow further. One option maybe to plant another Bubble Church at the Parish Hall with a new team on the 4th Sunday of the month. Then there would be an opportunity to worship at Bubble Church twice a month.

The Bubble Church team have been really encouraged to see the way the older children are growing and developing leadership skills as we give



them opportunities to take part in all the roles at Bubble Church (from puppeteers, to service leaders, catering team to tech team). It is such a joy and encouragement to see the older children serving in this way alongside the adults on the team. The younger children are growing in confidence in prayer, singing the worship songs with the puppets and love opening the Bubble Church bags to see what’s inside. There is a strong sense of God at work through the team and we have great fun serving. We continue to pray that God would grow this worshipping community.

Dan and Julia Watts



Discipleship

In our Life Groups and Open Church, there has been a wonderful interplay between the Bible, the Spirit and our hearts. We've dug deep in our studies this year, getting down to the basics of our faith in the Nicene Creed. Someone reported, "It's so important to think about what we actually

believe and how to explain it." The Romans Course and the Bible Course have helped with this too.

We held two 24 hours of prayer over the course of the year. God's presence was tangible. One person wrote, "Such a peaceful, quiet and Spirit-filled time spent with the Lord." There was a similar sense of joy in God's presence, and in each other's, at our Women's days at Harnhill and New Wine.

We are sensing a growth in spiritual hunger, and the Lent theme on a Spiritual Health Check has been helping us to do something about it.

Many families in our community seem warm towards the church and open to connecting further. Through our after-school drop-in session Tea & Toast, and our special events for

families such as the family fun afternoon and New Year Bounce event, we are seeing increasing numbers attending, and a strong sense of warmth and appreciation. One child chose to spend

her birthday at Tea and Toast drop-in club,

instead of having a party! The schools, Sunday and mid-week ministries seem to be growing a web of connections where children and their families feel comfortable with us and able to explore faith. Pray that these links will grow and flourish into faith.

The discipling that goes on at church is only the tip of the iceberg: most of it happens daily, as we interact with those we live, work and hang out with. Ken Benjamin from LICC will speak at the church weekend in September 2026, so he will challenge and inspire us further in this.

I completed my training for licensed lay ministry and was licensed at the Cathedral. I am very grateful for your care support through this process.

Anita Dobson



Pastoral care

'Carry each other's burdens and in this way you will fulfil the law of Christ'. I thank God for the loving obedience of the Christ Church family in caring for one another in a variety of circumstances and through different means.

The role of the Pastoral Care Team is 'to coordinate the responses to pastoral needs within the Church making use of existing structures such as the Staff Team, Warm Space, Mother's Union, Open Church, Bereavement Group, Home Groups

etc'. We meet four times a year to oversee this care. I thank each member of the team for their love, wisdom and hard work.

Holy Communion at home is provided by members of this team. A warm welcome is given to everyone including newcomers by the newcomers led by Alison Rowe. The Email Prayer Team prays for personal needs as requested. Please email me with requests or if you would like to join the team.

Please contact me with pastoral concerns or any general matters regarding pastoral care.

Philip Rowe
Pastoral Care Co-ordinator



Children

“Whoever welcomes this little child in my name welcomes me; and whoever welcomes me welcomes the one who sent me.” Luke 9:48.

What a blessing we receive by welcoming children! Each week our wonderful team welcomes over 30 families to our Jigsaw baby and toddler group. Jigsaw continues to be one of the most joyful, jolly, Jesus-filled parts of my week! It's such a fantastic encouragement when parents tell me that their little one is 'playing Monty' at home during the week and recreating that precious worship time we have. This is such a great opportunity to share Jesus' love with our local community. Over in Bible club at CCI, I've had some amazing conversations with the children. One child told me, "I'm not a Christian but sometimes I ask God to help me". Wow!

This child didn't know they were praying! How amazing to be part of that journey with them.

As lots of you will know, I am really passionate about creating an inclusive

‘... a great opportunity to share Jesus' love with our local community.’

and welcoming Children's Ministry here at Christ Church. I strongly believe that God chose to make each and every one of us unique and wonderful. "I praise you because I am fearfully and wonderfully made". Psalm 139:14. During the Sunday Connected group, we have one volunteer each week

dedicated to supporting children

with special educational needs and disabilities. We have expanded our resources and adapted how we set out the lesson and hall to create a welcoming inclusive environment. I would love to chat to you more about this and hear your ideas! As part of our Sunday groups, it's a real delight to be part of our children's journey as they travel along the stages of faith. From our youngest children in Crèche and Sparklers through to our older children in Connected, who amaze me with their incredible questions as we see their faith growing and deepening.

I value the support and prayers of all involved and if you would like to find out more about children's ministry, I would love to hear from you!



Harriet Jolly



School Chaplaincy and Church Schools



A year of growth

Jan 2025 – April 2026 has seen a year of growth in terms of provision by the chaplaincy team to the schools in Downend. We now serve in seven primary schools and the Downend secondary school.

Primary schools' chaplaincy

The schools' chaplaincy team has enabled children to experience the Christian story in Downend this year in a variety of ways.

These include:

Experience Events – over 900 primary children have visited church this year at Easter, Harvest and Christmas.

Prayer and Reflective Spaces in schools workshops – this academic year 570 children will have experienced a workshop in five different primary schools this year.

One child said the following and the head teacher followed up.

'Family is important to me. It took three families for me to find my forever family. I can say this here because I feel safe!'

The head teacher's comment on this was, '... that is incredibly moving and so wonderful to think that you and your team, with such wonderfully planned activities, opened the doors for that child. I spoke with her afterwards and she said she now feels brave enough to tell her class in small groups in that same room. Please pass on our thanks to your wonderful team, what incredibly generous people you all are.'

Christmas in a Box – 56 children at Blackhorse were unable to attend the Experience Christmas event so we took Christmas in a Box to two classes of children at the school.

Vintage Adventure – intergenerational worship lead by our Anna Chaplain and shared by Julie with 90 different children from Bromley Heath Infants across the year. In addition, Wriggly Peeps (a nursery) have visited at least twice.

Bible club at Christ Church Infants School – weekly visits by Harriet Jolly and Jenny Sheppard. This group goes from strength to strength with 35+ children engaging every week.

Chaplaincy visits to schools according to what each school needs. At the moment, Julie spends two afternoons and lunchtimes a week, per term in schools.

Activities include RE teaching (Christianity), working with worship leaders and supporting the C of E permanent prayer and reflective spaces and reading support in schools.

Assemblies and services for schools – Dan and Paul continue to provide assemblies and services to the Church of England primary schools and those schools with no religious designation, on request.

Funding – we secured a grant of £3,100 pounds from the St Nicholas and St Leonard Trust to fund resources for the primary schools' chaplaincy work for this year.

Collaboration with CAP

– this year seventeen families at local schools benefitted from CAP hampers at Christmas. These reach some of the most vulnerable families in the parish, not necessarily known at church.

'... over 900 primary children have visited church this year ...'

Schools' Chaplaincy Volunteers increase

– we are pleased that three new adults have joined the schools' volunteer team this year. This brings the total team, excluding paid employees, to nine. They have had access to training and social events this year to build team spirit as we serve God together.

I am grateful to the church community and volunteers for all their support. Thank you.

Julie Gardner

Growing Faith Chaplain

Dear God,
Thank for my lovely friends who care for me and my parents. Sorry for the times when I've hurt or damaged you creation. Please help me to understand you and love you with all my heart.
Amen



Youth

2025 was a year of consolidation and steady growth in the youth ministry at Christ Church. We currently have a pool of around 20 young people engaging with our groups, with around 10-12 young people bursting through the youth hub doors for our socials on a Thursday evening and 8-12 joining us for the discipleship sessions on Sundays.

Two significant highlights of the year were the Youth Weekend at Viney Hill where we explored some of Jesus' parables, descended from abseil towers and explored the forest; and the Baptism and Confirmation services where 3 of our teenagers made public professions of their faith. Underpinning all that we do is a deep desire to see young people discover more of God's love for them and take active steps forward in following him.

During the year in our Sunday teaching we have delved into Mark's gospel, explored 'The Nature of God',

reflected on 'Influencers' and more recently 'Encounters with Jesus'.

Midweek highlights have included Ice skating in Bath, cooking activities, a wide variety of sports and a Parents v Youth skittles and hungry hippos challenge. Each young person brings their different personalities and interests to bear and it's a real privilege for us as a team to serve them and invest in them week by week.

Whilst we haven't yet been able to

'I love the fact that there's such a wide range of things to do'

identify and recruit a youth worker, we have seen our team get stronger term by term. It's been great to welcome

Laura, Pete and Debbie in recent months.



Young people are vital to the life of Christ Church and one of our priorities has been ensuring they are involved in the life of the church. We've led two youth services in the last year, host after church refreshments in the church hall and youth hub every term and encourage young people to use their gifts in worship.

In the wider community links have been strengthened with Downend School where some of our young people have set up a Christian Union group and we've been able to lead lessons, assemblies and host the Ugandan Youth Fellowship band.

We value your prayers, financial support, interest and encouragement!

Paul Peterson

Finance

2025 has been an encouraging year where PCC finances are concerned. The PCC had set a budget for the year at a minimal deficit of £8k. There was agreement to reduce the parish share payable to the Diocese, to £100k (2024: £110k), on the understanding that we would seek to reinstate this for 2026 and beyond.

The generosity of all has ensured that income from planned giving, gift aid and plate collections is ahead of budget and a notable increase on 2024. This enabled the funding of mission, salaries and expenses of staff, supported the regular upkeep of the Church building, and paid for administration and running costs. Additional donations of £36k were also received, the majority of which were in response to the Younger Ministry giving day in March. Income from letting of buildings was slightly down in the year, at £42k (2024: £49k), however still a very good outturn in an increasingly competitive market.

We continue to be grateful recipients of significant grants, £61k in total for the year. These support the work of the Younger Ministry, CAP, Warm Space, Bubble Church, and Quakers Road, and have contributed significantly to both the repairs to the chancel roof and the installation of the heat pump system at the Parish Hall. We are incredibly thankful to all who have contributed so generously to the mission of the Church.

Expenditure on general church running costs and staffing has remained consistent with the previous year, at around £129k. The tithing of giving income received has

underpinned donations during the year of £25.3k to Mission Partners.

As referred above, there have been a couple of sizeable projects this year, which have been costly and depleted reserves a fair amount.

Repairs to the chancel roof were completed in the year. These cost a net £38k, after grants of £10k, and were funded from general funds.

Further, in a proactive response to replacing an ageing and obsolete heating system, a successful project was undertaken to replace the gas boiler system in the parish hall with a modern heat pump system. This was approved by the PCC as contributing to Christ Church's commitment to care for God's creation and supporting

'We are incredibly thankful to all who have contributed so generously to the mission of the Church.'

the Church of England's Net Zero 2030 Initiative. After grants, the net cost of £18k was also funded from general funds. Our thanks go to James Gardener for his oversight of this project and for bringing it in on budget. The parish hall is now a net zero building.

At Quakers Road, due to sound financial management over a number of years, there were sufficient funds to undertake replacement of windows. Our thanks go to Chris Green for his ongoing financial stewardship of Quakers Road.



At the end of the year, total funds are £157.1k, a net decrease of £13.1k

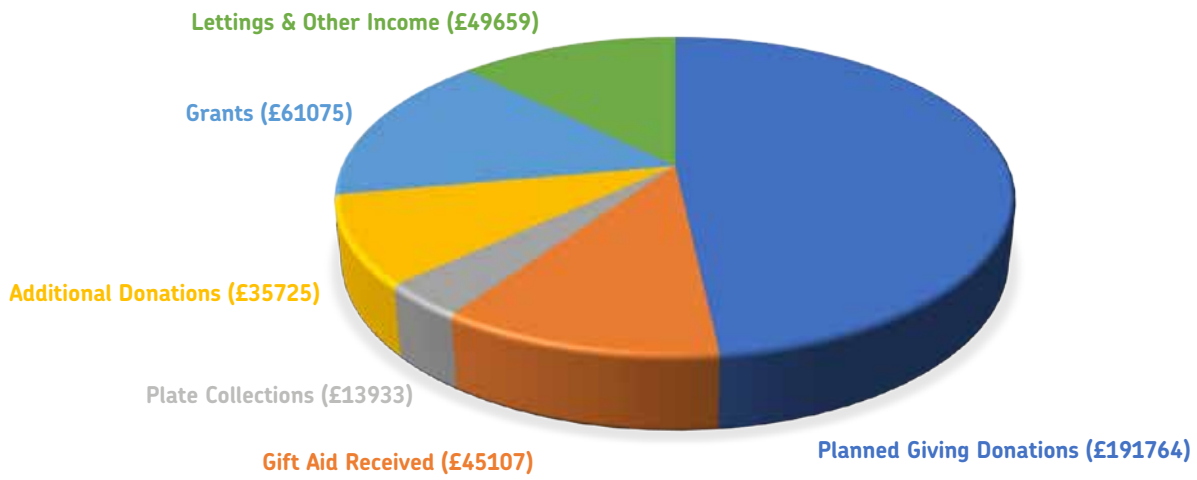
in the year. Unrestricted Funds (funds for day-to-day activities) decreased to £73k (2024: £129k), reflecting the costs of repairs to the chancel roof and the replacement of the parish hall heating system. Restricted funds (funds for specific purposes) increased to £84.0k (Younger Ministry £51k, CAP £32k, Flower Fund £1k).

The PCC would like to pass on its thanks to all who have contributed to the financial success of the church this past year. This simply would not be possible without the generosity of the congregation and the hard work and dedication of all involved in fundraising, financial oversight and administration, facilitating the hire of our buildings, and provision of financial governance and scrutiny.

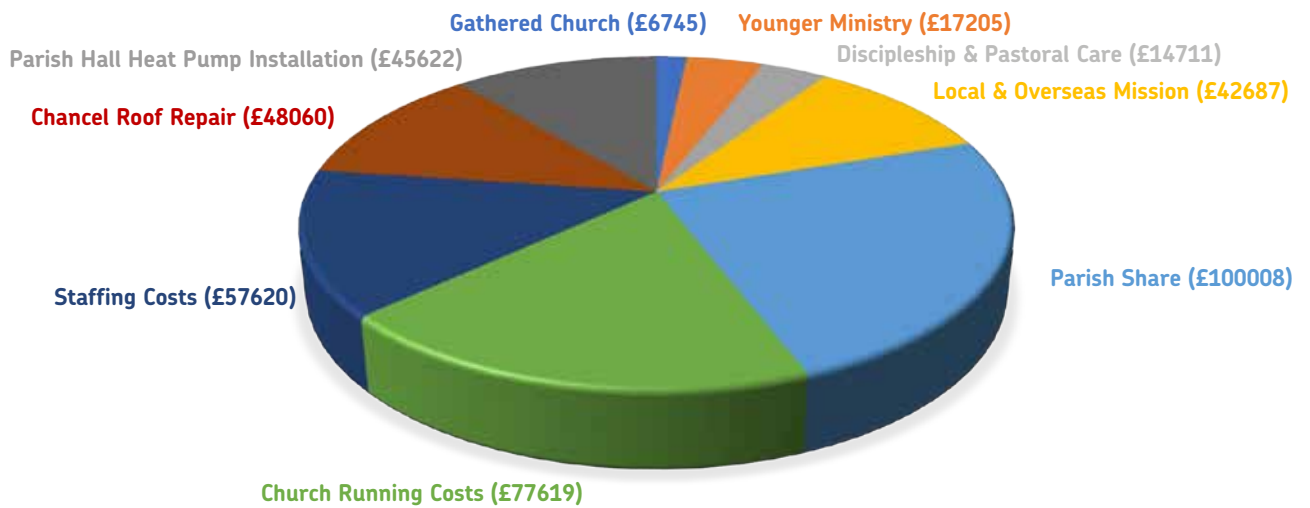
Special thanks to Gabrielle Foster, Jo Searle and Beth Mullins in the Church office, the Giving 4 Life team, Chris Green and members of the Parish Halls committee.

Nick Gale
Treasurer

Sources of income



How we spent our income



Income	£		Expenditure	£	
Planned giving donations	191,764	48%	Parish Share	100,008	24%
Lettings & other income	46,583	12%	Church Running Costs	77,619	19%
Gift Aid received	45,107	11%	Staffing Costs	57,620	14%
Grants	61,075	15%	Local & Overseas Mission	42,687	10%
Additional donations	35,725	9%	Younger Ministry	17,205	4%
Plate collections	13,933	4%	Discipleship & Pastoral Care	14,711	4%
Other	3,076	1%	Gathered Church	6,745	2%
			Chancel Roof Repair (grants received £10,010)	48,060	12%
			Parish Hall Heat Pump Installation (grants received £27,800)	45,622	11%
Total	397,263		Total	410,277	



0117 908 9867



christchurchdownend.com



office@christchurchdownend.com



[christchurchdownend](https://www.facebook.com/christchurchdownend)



[ChristChDownend](https://twitter.com/ChristChDownend)



[christchurchdownend](https://www.instagram.com/christchurchdownend)



[Christ Church Downend](https://www.youtube.com/channel/UC...)